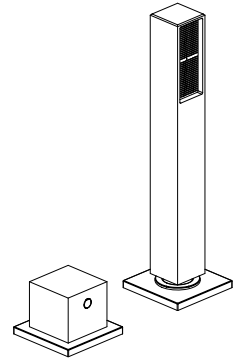


8444700

Diverter kit to complete the 5 hole roman tub installation

FINISHES

- 8444700PC Polished Chrome
- 8444700BN Brushed Nickel
- 8444700BB Brushed Black



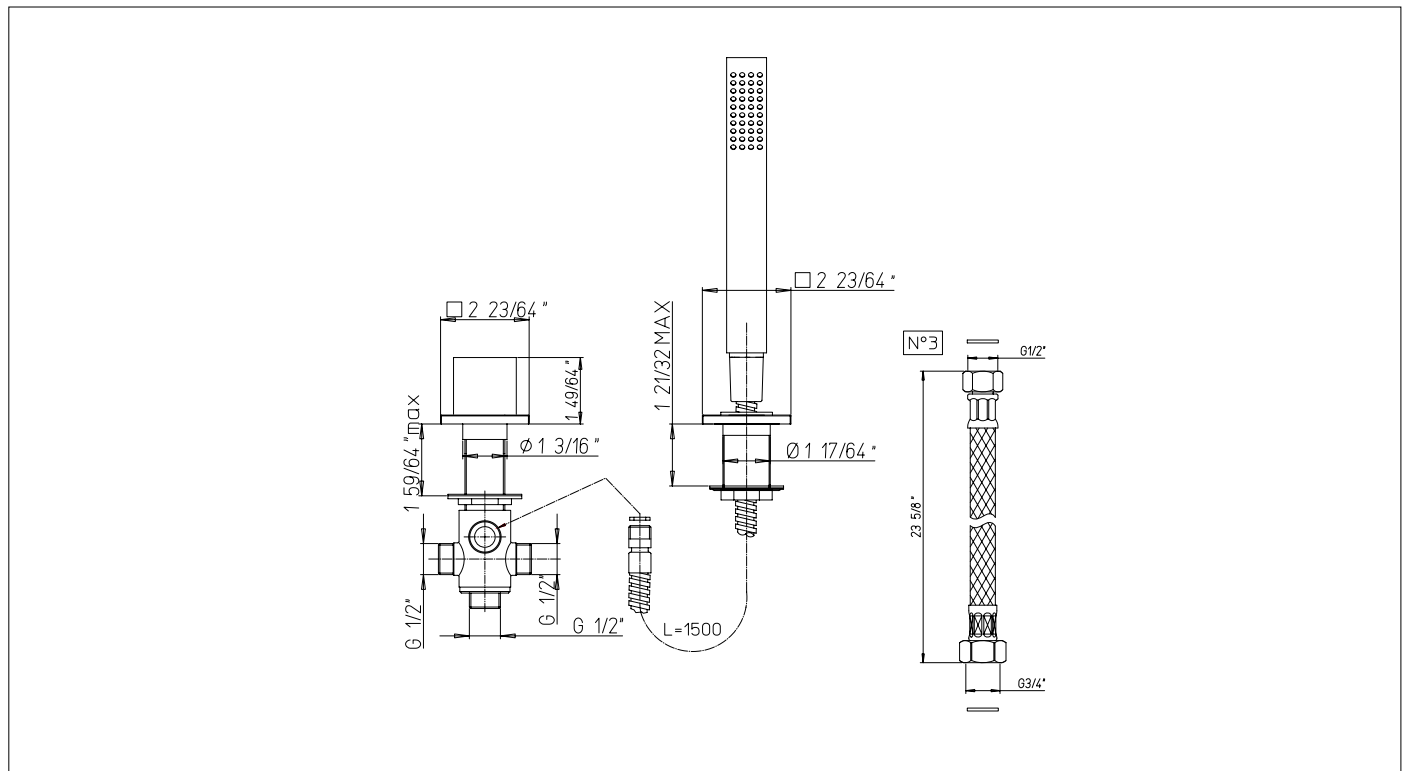
STANDARDS

- Compliant with ASME A112.18.1 - CSA B125.1

FEATURES

- Solid Brass Construction
- Single Control Diverter Cartridge
- Pull out matching hand spray
- Hand spray flow rate 1.8 gpm
- Includes check valve for Backflow prevention
- Step-By-Step Installation Instructions

DIMENSIONS



Project _____
 Contractor _____